

larson[®]

larcove[®] A2

STANDARD COLOUR CHART

larson

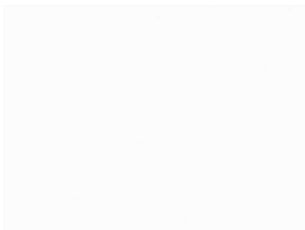
Aluminium composite panels

larcove A2

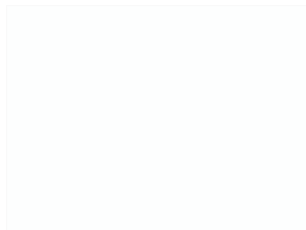
Aluminium honeycomb panels



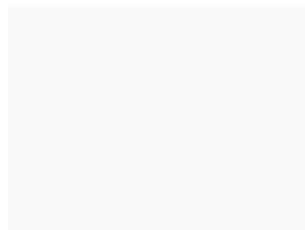
SOLID COLOURS



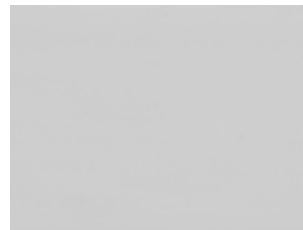
Signal White 9003
(ES1568)



Traffic White 9016
(ES1763)



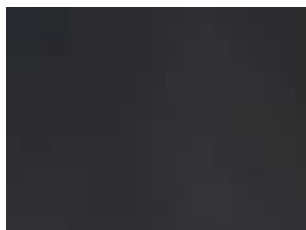
Pure White 9010
(ES3203)



Light Grey 7035
(ES1518)



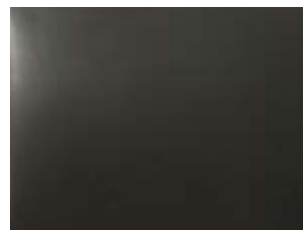
Mouse Grey 7005
(ES2150)



Anthracite Grey 7016
(ES1563)



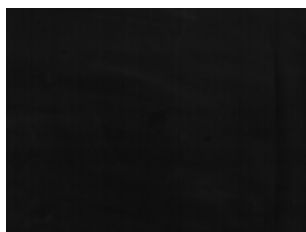
Black Grey 7021
(ES1354)



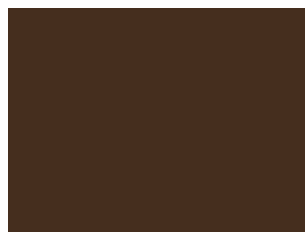
Umbra Grey 7022
(ES1551)



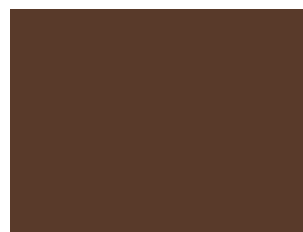
Graphite Grey 7024
(ES1369)



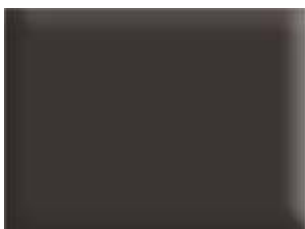
Jet Black 9005
(ES1536)



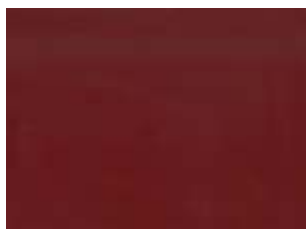
Sepia Brown 8014
(ES1478)



Chesnut Brown 8015
(ES2045)



Grey Brown 8019
(ES1464)



Purple Red 3004
(ES2475)



Traffic Red 3020
(ES2100)



Signal Yellow 1003
(ES2476)



Yellow Green 6018
(ES1405)



Violet Blue 5000
(ES1545)

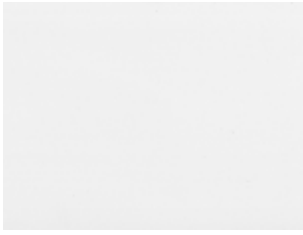


Ultramarine Blue 5002
(ES1512)



Steel Blue 5011
(ES1519)

METALLIC COLOURS



White Metallic
(ES2133)



Sunrise Silver
(ES1661)



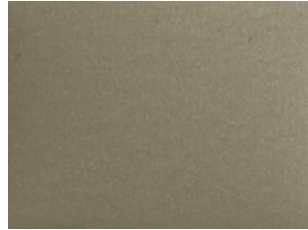
Silver Metallic
(ES1990)



Smoke Metallic
(ES1605)



Champagne Metallic
(ES1608)



Bronze Metallic
(ES1646)



Lead Grey
(ES2132)



Grey Metallic
(ES1659)



Manganese
(ES2588)



Dark Grey Metallic
(ES2134)

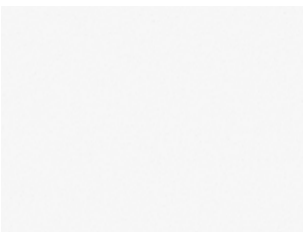


Blue Metallic
(ES1637)

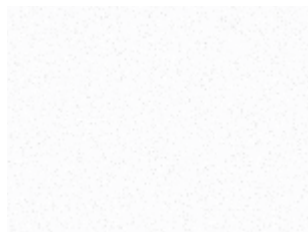


Copper Metallic
(ES1521)

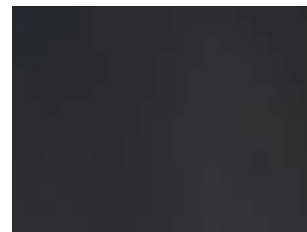
TEXTURED FINE COLOURS



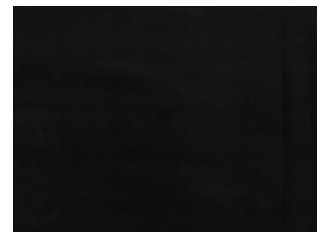
Textured Fine
Pure White 9010
(ES2247)



Textured Fine
Traffic White 9016
(ES2842)



Textured Fine
Anthracite Grey 7016
(ES2226)



Textured Fine
Jet Black 9005
(ES2248)

Coils in stock are 1500 mm wide on **larsen*** panels coated with PVDF or DG5/HDP paints.

For other widths, check availability - Widths not in stock subject to a minimum order.

The colours in this colour chart are very close to reality. We advise to select the final colour over physical samples.

The colours shown in this document are matt finishes with a gloss level lower than 40.

TREND COLOURS IN NORTH AMERICA



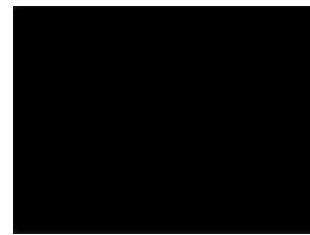
Medium Grey Mica
(US0975)



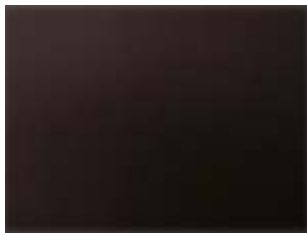
Classic Bronze
(US0987)



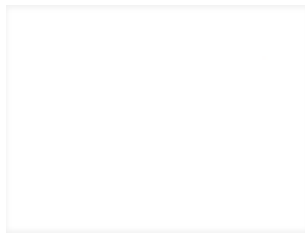
Silversmith
(US0999)



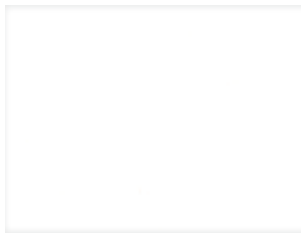
Classic Black
(US0988)



Charcoal
(US0974)



Bone White
(US0984)



RVW White
(US0979)



Cadet Grey
(US0986)

COATING POSSIBILITIES

PVDF

(Polyvinylidene Fluoride)

Based on PVDF resins with extraordinary performance. Nominal paint thicknesses:

a) PVDF 2L Coastal: approx. 31µ

- Gloss from 20G to 40G.
- Excellent colour stability, minimal chalking and very good chemical resistance.
- Extraordinary protection against weathering, radiation and atmospheric contaminants.
- Outstanding flexibility when profiled, folded and coiled.

DG5

(High Durable Polyester)

Based on HDP resins with nominal paint thicknesses (depending on the colour):

a) DG5 2L Coastal: approx. 35µ.
a) DG5 3L Coastal: approx. 55µ.
a) DG5 2L: approx. 25µ.

- Gloss from 10G to 90G.
- Excellent protection against weathering, UV radiation, and atmospheric contaminants.
- Outstanding hardness and flexibility when profiled, folded, and coiled.

fluorlac®

(Fevе LUMIFLON™ 2 layers)

Based on fluoropolymer resins with a nominal thickness of 30µ (depending on the colour).

- RAL & NCS colour chart available in matte, satin, and gloss finishes.
- Possibility of matching specific colours.
- Very small quantities available, orders starting from 75 m² with immediate delivery within 2-3 weeks.
- Excellent weather resistance and chemical durability.
- Outstanding resistance to abrasion.

This catalogue provides general information on **Alucoil** and their products. Despite having verified all of the information contained in this catalogue, **Alucoil** does not accept any liability for any errors or printing failures that may lead to material damage, inaccuracies or misunderstandings. All of its contents are for informational purposes only and can be confirmed directly with the company itself.

Alucoil reserves the right to update, modify, edit or remove any content without prior notice. The information contained in this document is for guidance purposes only and may undergo changes. **Alucoil** accepts no responsibility for the use of this catalogue, which, in any event, is aimed at people with technical training, and is subject to their responsibility and criterion. Any unauthorised reproduction, distribution, public communication and/or transformation of this document will be an infringement of intellectual property law.



INFINITY (Bulgaria)
Smoke Metallic, Grey Metallic, Lead Grey and Manganese
Starh Architects



HOUSING BUILDING (France)
Pure White 9010



DANSKE BANK (Lithuania)
Bronze Metallic



Alucoil® Design
Grupo Alibérico
Endless Architectural Design Possibilities

Alucoil offers a website where customers and architects can browse a large selection of completed projects.
www.alucoildesign.com





BOSTON LOGAN AIRPORT, TERMINAL E (Boston, MA, USA)
Boston Red, Silver Metallic, Anthracite Grey 7016 and Jet Black 9005.
Luis Vidal Architects



Alucoil[®]

Grupo Alibérico

Polígono Industrial de Bayas
Calle Ircio, Parcelas R68 - R74
09200 Miranda de Ebro (SPAIN)
+34 947 333 320
info@alucoil.com

www.alucoil.com